



TRACKING CRIME IN NYC PARKS

Quarterly Data on Crime in Parks

Prior to April 2006, the New York City Police Department (NYPD) did not specifically track crimes occurring on city parkland.* Following extensive advocacy efforts by New Yorkers for Parks and other groups, Local Law 114 was passed requiring the NYPD to track crime in the City's 20 largest parks. In 2008, the program was expanded to 30 parks. New Yorkers for Parks continues to advocate for the tracking of crime in all parks throughout the city.

*The lone exception is Central Park, where crime has been tracked by the Central Park Police Precinct for decades.

FLUSHING MEADOWS CORONA PARK

Flushing Meadows Corona Park, Queens

Corona, Flushing, Rego Park, Forest Hills, Kew Gardens, Queensboro Hill

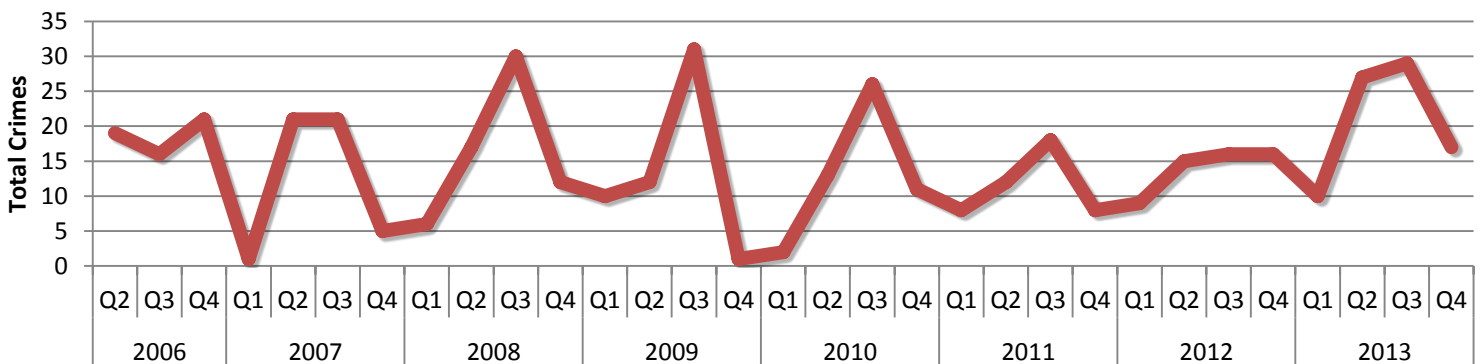
898 acres

Police Precinct: 107, 109, 110, 112

Council District: 20, 21, 24, 29

Community Board: Queens 3, 4, 6, 7, 8

Flushing Meadows Corona Park Quarterly Crimes



The NYPD has been tracking occurrences of the seven major felonies in Flushing Meadows Corona Park since April 2006. The table above reflects the park's quarterly crime data. The park contains multiple large-scale attractions, including the USTA Tennis Center, Citi Field and several cultural institutions. Crime rates at this site are affected by an increased number of car break-ins during the season, as well as physical altercations that occur during sporting events.

Major Felony Crime Complaints: Flushing Meadows Corona Park, Queens

	Murder	Rape	Robbery	Felony Assault	Burglary	Grand Larceny	Grand Larceny Auto	TOTAL
Q2, 2006	0	0	3	5	2	9	0	19
Q3, 2006	0	0	2	4	1	8	1	16
Q4, 2006	1	0	10	1	0	9	0	21
Q1, 2007	0	0	0	0	0	1	0	1
Q2, 2007	0	1	1	4	3	8	4	21
Q3, 2007	0	1	2	4	1	10	3	21
Q4, 2007	0	0	0	0	1	3	1	5
Q1, 2008	0	0	0	0	4	2	0	6
Q2, 2008	0	1	0	3	0	10	3	17
Q3, 2008	0	0	0	9	2	14	5	30
Q4, 2008	0	0	2	0	1	8	1	12
Q1, 2009	0	0	1	1	3	5	0	10
Q2, 2009	0	0	1	3	1	4	3	12
Q3, 2009	0	0	0	13	0	15	3	31
Q4, 2009	0	0	0	0	0	1	0	1
Q1, 2010	0	0	0	0	2	0	0	2
Q2, 2010	0	0	2	3	0	8	0	13
Q3, 2010	0	1	5	1	2	17	0	26
Q4, 2010	0	0	3	1	0	6	1	11
Q1, 2011	0	0	1	0	0	7	0	8
Q2, 2011	0	0	0	2	2	8	0	12
Q3, 2011	0	1	3	0	3	9	2	18
Q4, 2011	0	0	1	1	0	5	1	8
Q1, 2012	0	0	0	0	0	9	0	9
Q2, 2012	0	0	0	1	2	10	2	15
Q3, 2012	0	0	1	1	1	10	3	16
Q4, 2012	0	0	1	3	2	6	4	16
Q1, 2013	0	0	1	1	0	7	1	10
Q2, 2013	0	0	2	2	0	22	1	27
Q3, 2013	0	0	1	3	4	20	1	29
Q4, 2013	0	0	4	0	2	9	2	17
TOTAL	1	5	47	66	39	260	42	460

Data courtesy of the New York City Police Department and the Office of New York City Council Member Vanessa L. Gibson.

