



TRACKING CRIME IN NYC PARKS

Quarterly Data on Crime in Parks

Prior to April 2006, the New York City Police Department (NYPD) did not specifically track crimes occurring on city parkland.* Following extensive advocacy efforts by New Yorkers for Parks and other groups, Local Law 114 was passed requiring the NYPD to track crime in the City's 20 largest parks. In 2008, the program was expanded to 30 parks. New Yorkers for Parks continues to advocate for the tracking of crime in all parks throughout the city.

*The lone exception is Central Park, where crime has been tracked by the Central Park Police Precinct for decades.

CENTRAL PARK

Central Park, Manhattan

Midtown, Lincoln Square, Upper West Side, Manhattan Valley, Harlem, East Harlem, Upper East Side, Lenox Hill

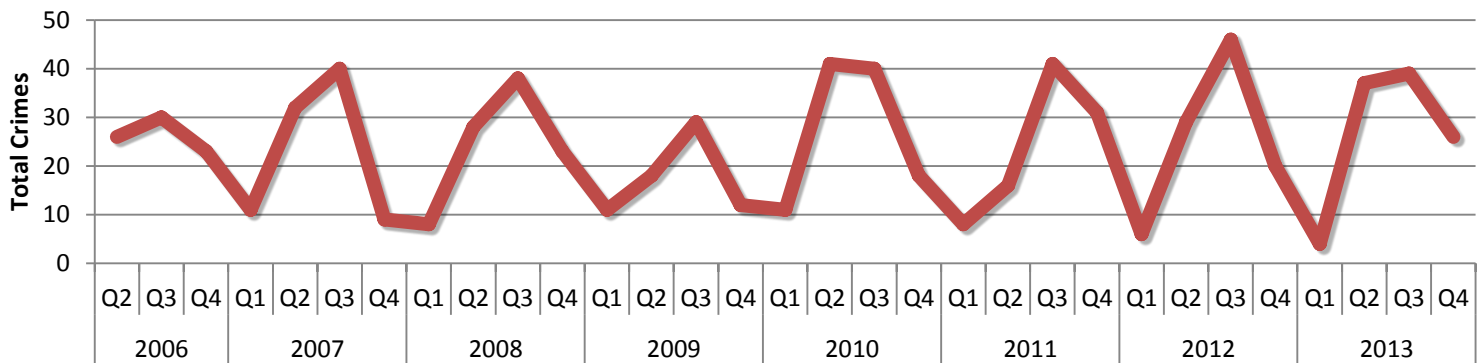
843 acres

Police Precinct: Central Park Precinct

Council District: 3, 4, 6, 7, 8, 9

Community Board: Manhattan 5, 7, 8, 10, 11

Central Park Quarterly Crimes



The NYPD has been tracking occurrences of the seven major felonies in Central Park for decades. The number of crimes reported in Central Park consistently exceeds the other parks where crime is tracked. It is the most visited park in the system, and it is likely that the number of crimes per visitor is lower than other sites. However, without accurate usership numbers on the other parks it is difficult to compare the crime rate across properties.

Major Felony Crime Complaints: Central Park, Manhattan

	Murder	Rape	Robbery	Felony Assault	Burglary	Grand Larceny	Grand Larceny Auto	TOTAL
Q2, 2006	0	0	6	1	1	18	0	26
Q3, 2006	0	0	8	1	1	20	0	30
Q4, 2006	0	0	6	0	0	17	0	23
Q1, 2007	0	0	8	0	0	3	0	11
Q2, 2007	0	0	6	4	0	22	0	32
Q3, 2007	0	1	10	5	1	22	1	40
Q4, 2007	0	0	9	0	0	0	0	9
Q1, 2008	0	0	3	0	0	5	0	8
Q2, 2008	0	0	8	2	1	17	0	28
Q3, 2008	0	1	7	0	2	28	0	38
Q4, 2008	0	0	7	1	0	15	0	23
Q1, 2009	0	0	4	0	0	6	1	11
Q2, 2009	0	0	7	2	0	9	0	18
Q3, 2009	0	0	5	3	3	18	0	29
Q4, 2009	0	0	4	1	0	7	0	12
Q1, 2010	0	0	5	0	0	6	0	11
Q2, 2010	0	2	9	1	1	28	0	41
Q3, 2010	0	5	8	3	0	24	0	40
Q4, 2010	0	0	1	2	1	5	9	18
Q1, 2011	0	0	4	0	0	4	0	8
Q2, 2011	0	1	3	3	0	9	0	16
Q3, 2011	0	1	5	0	0	35	0	41
Q4, 2011	0	0	6	5	1	19	0	31
Q1, 2012	0	0	0	3	0	3	0	6
Q2, 2012	0	0	4	2	0	23	0	29
Q3, 2012	0	2	6	0	2	36	0	46
Q4, 2012	0	0	4	2	0	14	0	20
Q1, 2013	0	0	2	0	0	2	0	4
Q2, 2013	0	1	2	3	5	26	0	37
Q3, 2013	0	4	4	0	1	30	0	39
Q4, 2013	0	1	8	2	0	15	0	26
TOTAL	0	19	169	46	20	486	11	751

Data courtesy of the New York City Police Department and the Office of New York City Council Member Vanessa L. Gibson

